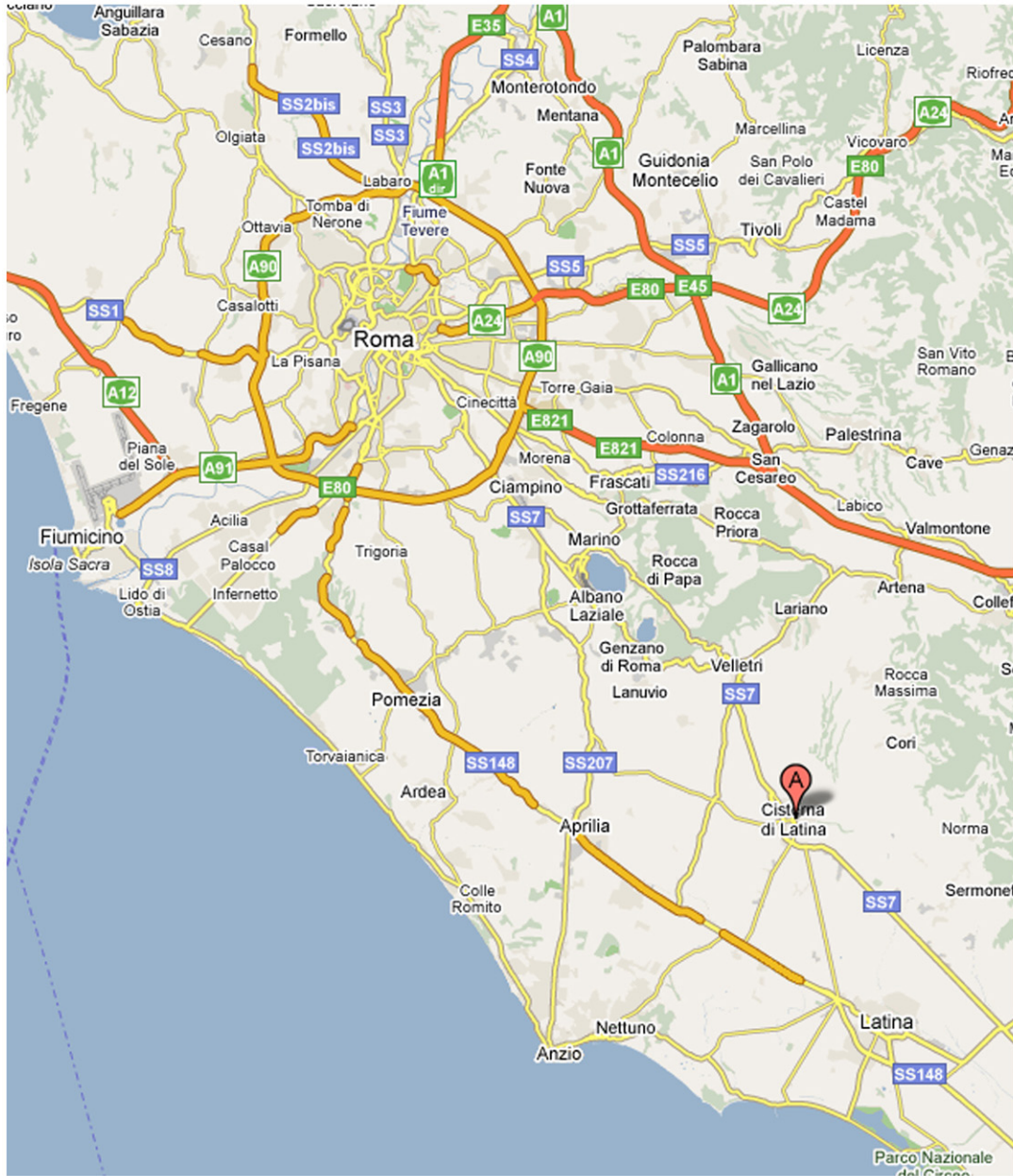


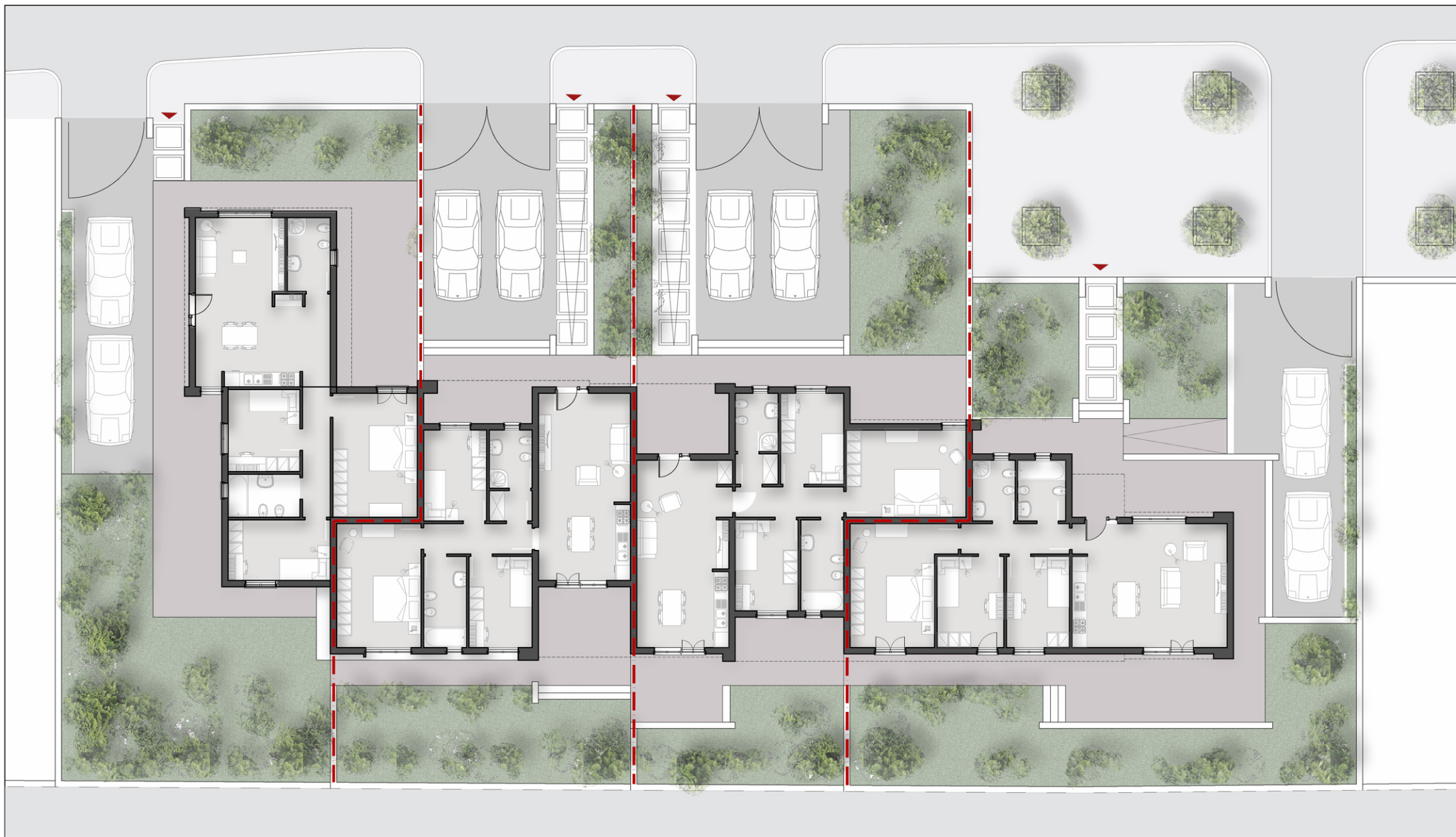
INQUADRAMENTO TERRITORIALE



VISTA PROSPETTICA



PIANTA D'INSIEME DELLE VILLETTE



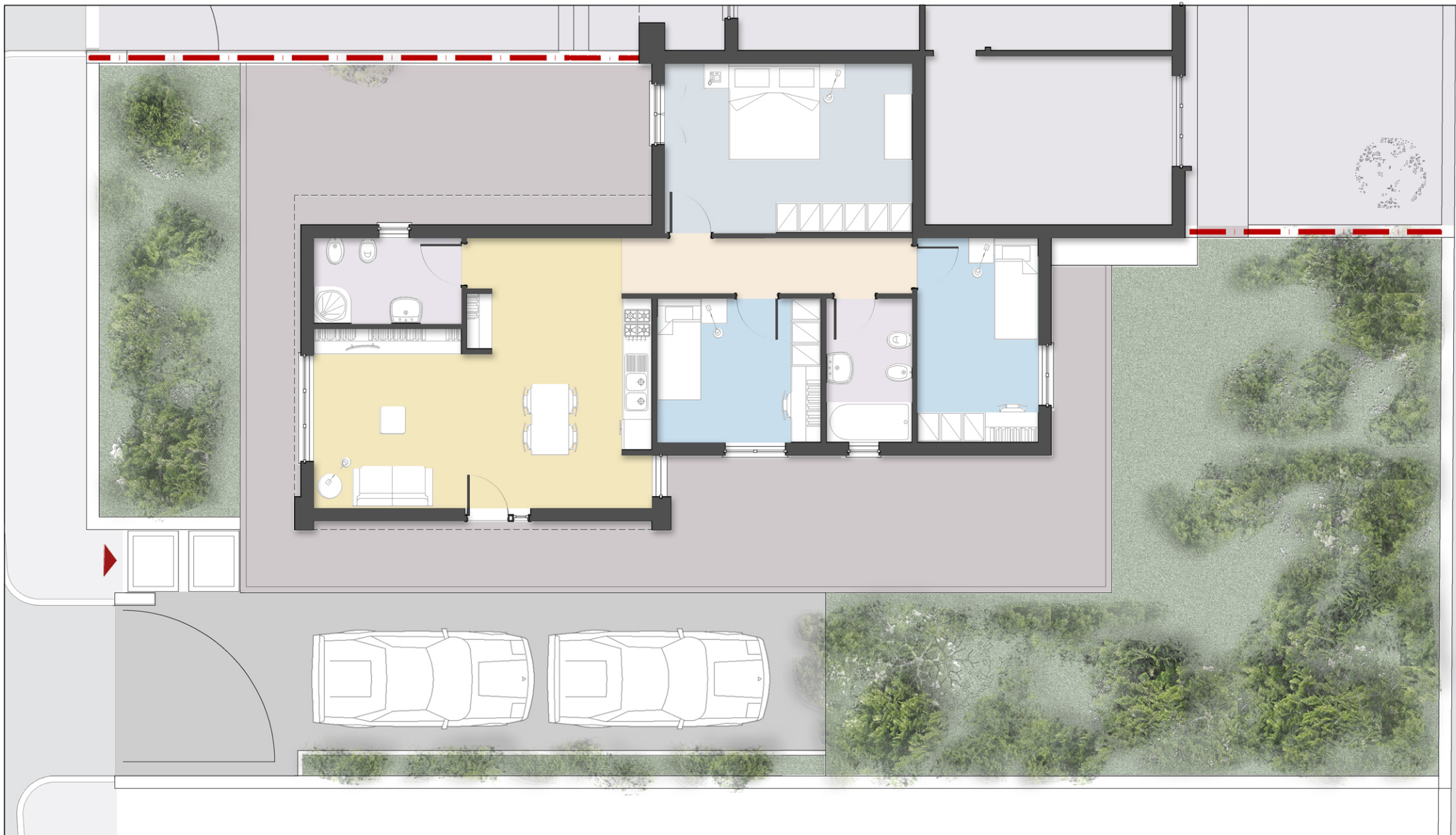
Proprietà unità immobiliare A: mq. 350.47

Proprietà unità immobiliare C: mq. 309.38

Proprietà unità immobiliare B: mq. 265.76

Proprietà unità immobiliare D: mq. 369.71

UNITA' IMMOBILIARE A



Dati generali:

Superficie Utile Lorda: mq. 94.30

Superficie Utile Netta: mq. 81.26

Terrazzo e giardino: mq. 243.00

Area a parcheggio: mq. 38.95

Dati specifici vani:

■ Soggiorno-cucina: mq. 30.39

■ Camera matrimoniale: mq. 16.40

■ Cameretta: mq. 9.71

■ Cameretta: mq. 9.26

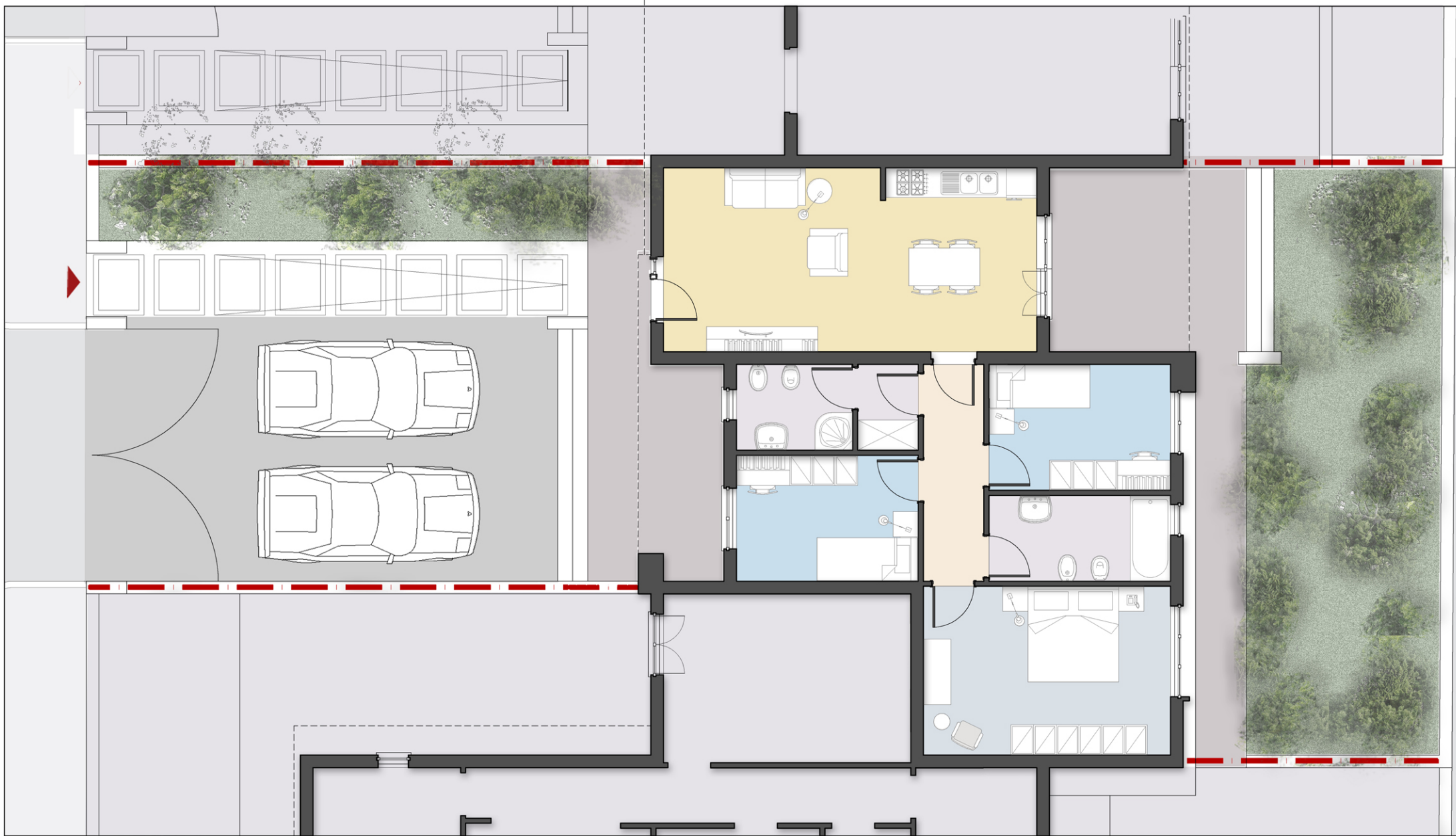
■ Servizi: mq. 4.98

■ Servizi: mq. 4.84

■ Disimpegno: mq. 5.66










UNITA' IMMOBILIARE B



Dati generali:

Superficie Utile Lorda: mq. 91.58
Superficie Utile Netta: mq. 79.00
Terrazzo e giardino: mq. 171.26
Area a parcheggio: mq. 29.70

Dati specifici vani:

	Soggiorno-cucina: mq. 27.00		Servizi: mq. 6.12
	Camera matrimoniale: mq. 16.40		Servizi: mq. 6.12
	Cameretta: mq. 9.00		Disimpegno: mq. 5.16
	Cameretta: mq. 9.00		






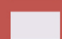

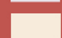

UNITA' IMMOBILIARE C



Dati generali:

Superficie Utile Lorda: mq. 92.17
Superficie Utile Netta: mq. 79.00
Terrazzo e giardino: mq. 202.00
Area a parcheggio: mq. 29.70

Dati specifici vani:

	Soggiorno-cucina: mq. 27.00		Servizi: mq. 6.12
	Camera matrimoniale: mq. 16.40		Servizi: mq. 6.12
	Cameretta: mq. 9.00		Disimpegno: mq. 5.16
	Cameretta: mq. 9.00		



UNITA' IMMOBILIARE D

Dati generali:






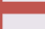
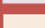
Superficie Utile Lorda: mq. 92.50

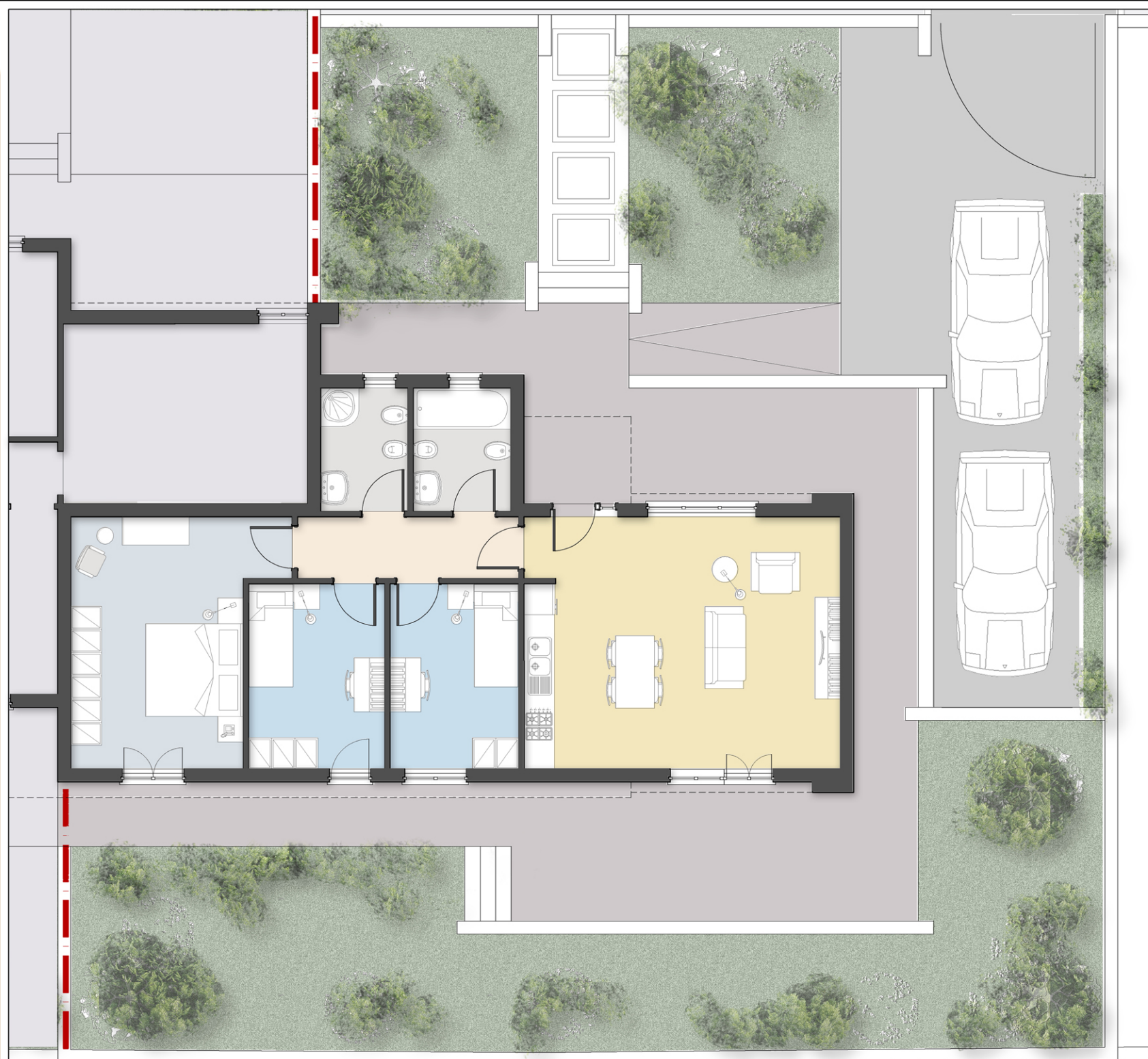
Superficie Utile Netta: mq. 80.00

Terrazzo e giardino: mq. 261.95

Area a parcheggio: mq. 29.88

Dati specifici vani:

-  Soggiorno-cucina: mq. 30.13
-  Camera matrimoniale: mq. 17.55
-  Cameretta: mq. 9.53
-  Cameretta: mq. 9.00
-  Servizi: mq. 4.55
-  Servizi: mq. 4.08
-  Disimpegno: mq. 5.15



VISTA PROSPETTICA

